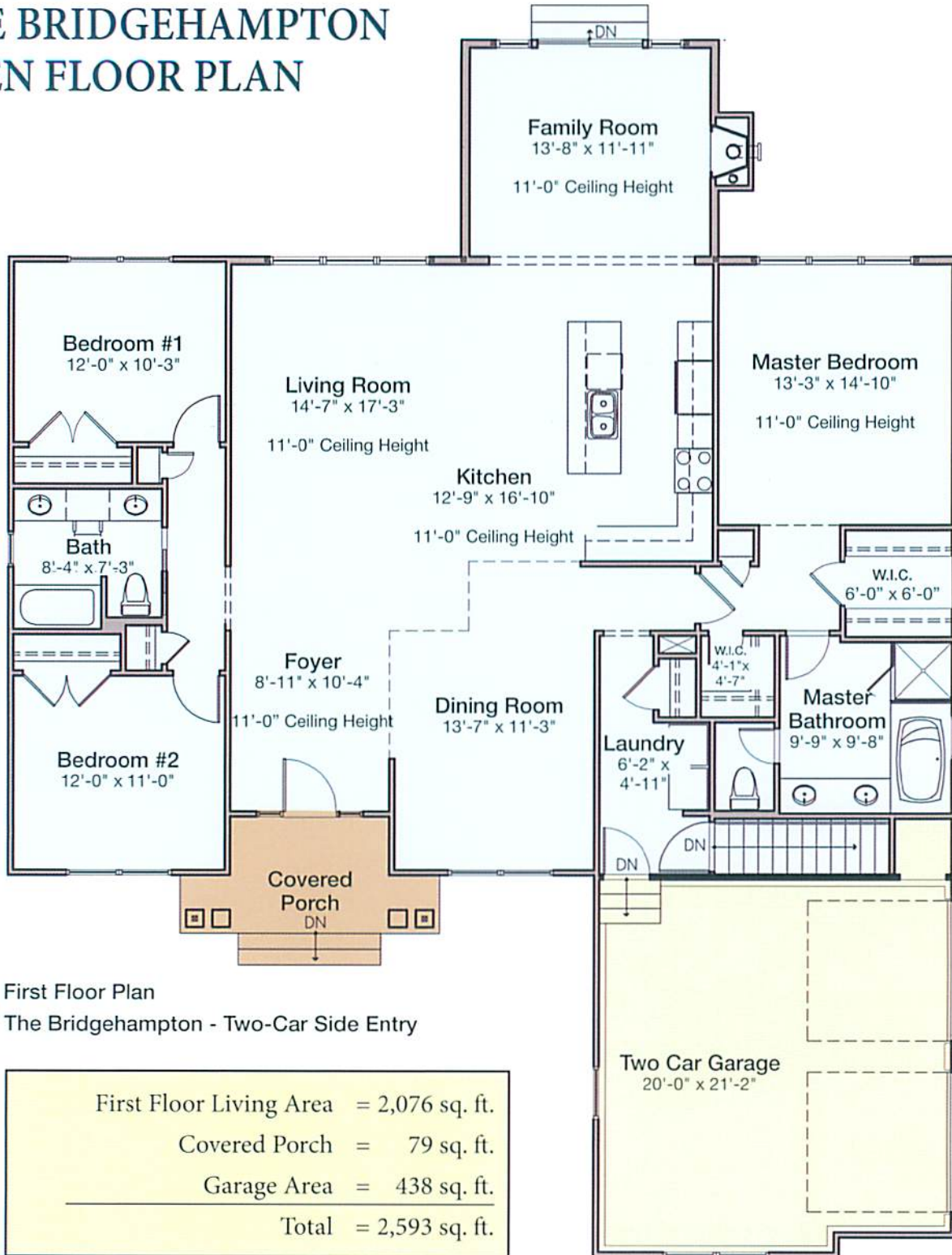


THE BRIDGEHAMPTON OPEN FLOOR PLAN



First Floor Plan
The Bridgehampton - Two-Car Side Entry

First Floor Living Area	= 2,076 sq. ft.
Covered Porch	= 79 sq. ft.
Garage Area	= 438 sq. ft.
Total	= 2,593 sq. ft.